



DIAMOND AND POLISHING WHEELS FOR  
**GLASS PROCESSING**



SPECIALISTS SINCE 1929

# PROFESSIONALITY AND PASSION

Over the years, SIAPI SMARTECH has established itself in the markets throughout the world thanks to the quality of its rubber and rubber-cerium polishing wheels.

Currently, we are able to provide a complete range of high quality tools, for glass, natural and artificial stones processing, which includes cup and peripheral diamond wheels for straight-lines double-edgers and CNC machineries

# DIAMOND AND POLISHING WHEELS FOR FLAT GLASS PROCESSING

Siapi Smartech Glass Division designs wheels for the most  
common glass grinding machines, such as:

Bavelloni	Baudin	Lattuada
Busetti	Bystronic	Lovati
Bottero	Cms Brembana	Schiatti
Bovone Benteler	Covesa	Sun Tool
Besana	Glassline	Zafferani
Bando	Intermac	Zanetti

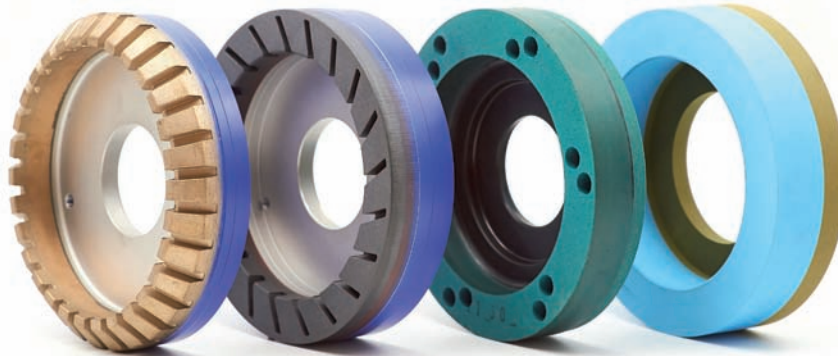
## CUP DIAMOND WHEELS FOR BEVELLING ON MANUAL AND SEMI-AUTOMATIC MACHINERIES



- 100 M13 (WHEELS IN METAL BONDING)
- 200 B29 (WHEELS IN RESIN BONDING)
- 46 A28R/2, (WHEELS IN RUBBER BONDING, OF HIGH QUALITY AND LONG LIFE)

Diamond and polishing wheels, available in our warehouse, for all the manual, automatic and semi-automatic machineries.

## CUP DIAMOND AND POLISHING WHEELS FOR STRAIGHT LINE AND DOUBLE EDGERS



### DIAMOND AND POLISHING WHEELS FOR HIGH GLASS REMOVAL

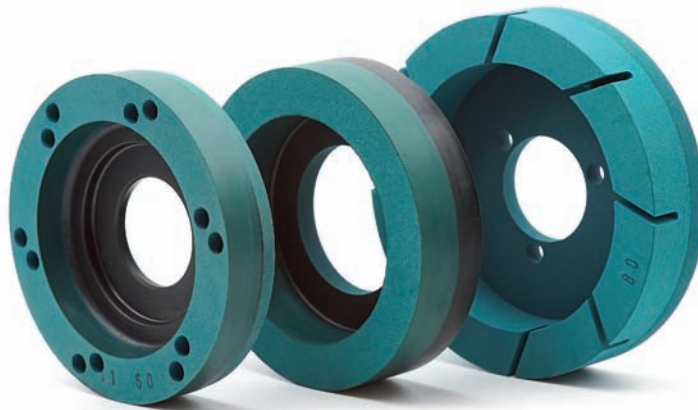
- The new range of diamond and cup polishing wheels are designed for optimal edge preparation before using rubber-cerium wheels or felt with liquid cerium.
- By correctly selecting the grain size sequence, a good finish can be obtained even without the use of cerium grinding wheels.

**NEW**

## AR28 M1

### NEW LINE OF RUBBER BONDING POLISHING WHEELS FOR DOUBLE EDGERS MACHINES

⦿ Diameters available:  
Ø 130, Ø 150, Ø 170



⦿ Available grits size:  
46 - 60 - 80 - 120 - 180

#### EXCELLENT POLISHING DEGREE, RELIABILITY, LONG-LIFE

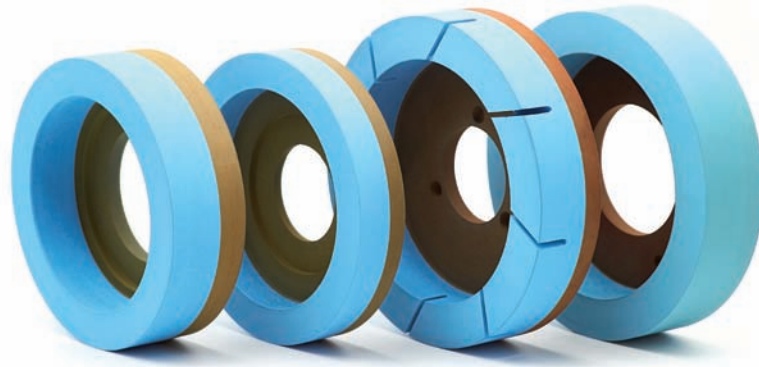
The new AR28M1 line, thanks to the use of high quality abrasives, allows the use of 60 grit (instead of grit 46) after the diamond wheels

The advantage of using the grain 60 is that of not releasing grains able to damage or scratch the glass edge

Standard wheels available in stock for Busetti, Bottero, Bavelloni, Bentler machines.

# **RUBBER-CERIUM RC BLU-90**

## CUP WHEELS FOR STRAIGHT-LINE AND DOUBLE-EDGER MACHINERIES



⊙ Diameters available  
Ø 130, Ø 150, Ø 170

**EXCELLENT POLISHING DEGREE, RELIABILITY, LONG-LIFE**

RC BLU-90, The new range of wheels in rubber-cerium, the most brilliant edge quality at the lowest cost per polished meter.

Manufactured with carefully selected raw materials to ensure maximum reliability and durability. Standard wheels available in stock for Machines: Busetti, Bottero, Baveloni, Bentler.



## **BLACKTYPE-LINE** CUP DIAMOND AND POLISHING WHEELS FOR ARRIS



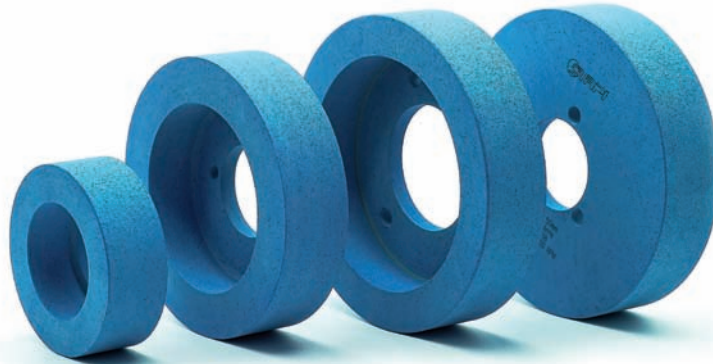
**EXCELLENT POLISH DEGREE OF THE ARRIS. RELIABILITY AND LONG LIFE**

BLACK TYPE is a polishing wheel in resin bonded, manufactured with a selected combination of silicon carbide, designed to be used after diamond spindles.

To obtain the best results it is recommended to combine it with the diamond resin wheel proposed by SIAPI.

Wheels available in stock in the standard dimensions for the most widespread machines.

## **LINE OF EFX BLUE G ARRIS** CUP DIAMOND AND POLISHING WHEELS FOR ARRIS

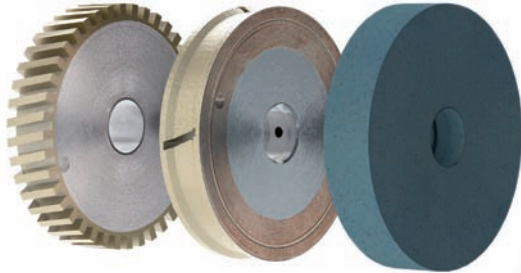


### **BRILLIANT FINISH ARRIS, RELIABILITY AND DURABILITY**

BLU G ARRIS, resin bonded cup wheels, with a capacity to easily adapt to the machine and to guarantee a brilliant finish of the Arris. To obtain the best results it is recommended to combine it with the diamond resin wheel proposed by SIAPI.

Standard sizes available in stock, for the most common machines on the market.

## CNC LINE PERIPHERAL WHEELS FOR CNC MACHINERIES



Example: set of diamond and polishing wheels for glass tickn. 8 mm.

- Range of diamond and polishing wheels for cnc
- Excellent edge quality at the lowest cost per polished meter



**EXCELLENT EDGE-FINISHING, LONG LIFE OF THE DIAMOND AND POLISHING WHEELS.**

Wheels available in warehouse in standard dimensions for the most widespread machineries.

## **CNC LINE**

### DIAMOND AND POLISHING WHEELS FOR VERTICAL CNC MACHINERIES



THE BEST EDGE QUALITY AT THE LOWEST  
COST PER WORKED METER.

Wheels available in warehouse in standard dimensions  
for CMS, INTERMAC, DENVER, FOREL machines.



# DIAMOND LINE

## MILLING TOOLS FOR CNC MACHINERIES



LONG LASTING MILLING TOOLS FOR MONOLITHIC AND LAMINATED GLASS

Standard milling tools available in stock from  $\varnothing$  10 to  $\varnothing$  22

## **DRILLS LINE**

### DIAMOND DRILLS FOR AUTOMATIC AND CNC MACHINERIES



RANGE OF DIAMOND DRILLS WITH COUNTERSINK FOR GLASS, SUITABLE  
FOR AUTOMATIC AND CNC DRILLING MACHINES.

Standard diamond drills available in stock for the most widespread machines

# DIAMOND LINE

## DIAMOND PERIPHERAL WHEELS FOR DOUBLE EDGERS AND CNC MACHINERIES

DIAMOND WHEELS FOR HIGH REMOVAL OF GLASS

Standard Diamond wheels available in stock



## **SCR/ARL28M** PERIPHERAL POLISHING WHEELS FOR DOUBLE EDGERS



**RUBBER BONDED PERIPHERAL POLISHING WHEELS**  
AR28M, SCR28, long lasting wheels, excellent edge-finishing.

**EXCELLENT EDGE-PREPARATION, RELIABILITY AND LONG-LIFE**  
Available grits: 46 - 60 - 80 - 120 - 180

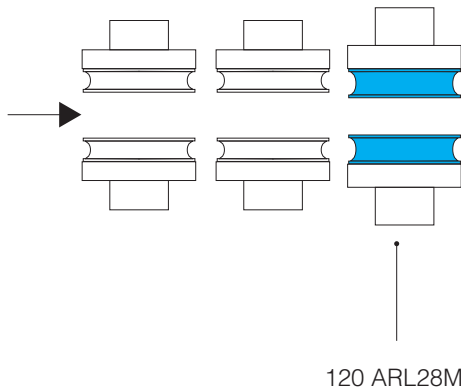
Standard wheels available in stock for  
BUSETTI, BOTTERO, BAVELLONI, BENTLER machines.



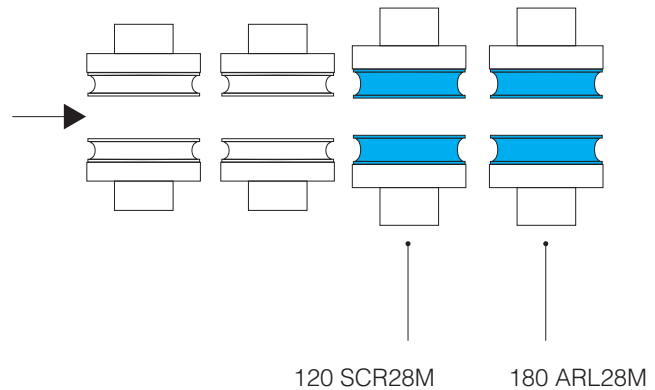
# ARL28 / SCR28

## LINE OF PERIPHERAL POLISHING WHEELS FOR DOUBLE EDGERS MACHINERIES

Double edger with 1 polishing spindle



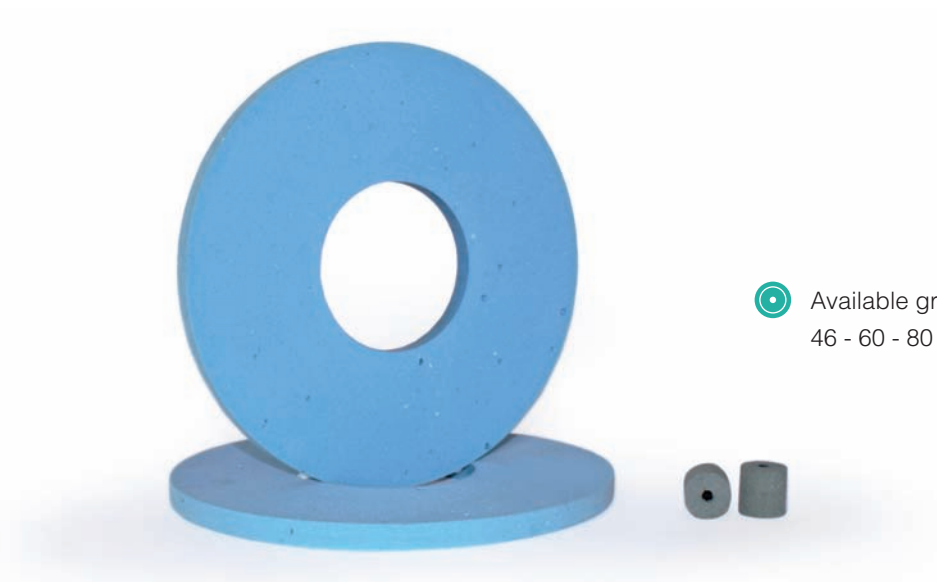
Double edger with 2 polishing spindles



Examples of application of SIAPI peripheral wheels on the most common machines.  
AR28M, SCR28, long lasting wheels, optimal edge finishing.

## SLK-LE LINE

PERIPHERAL WHEELS ABLE TO REMOVE THE LOW-E COATING

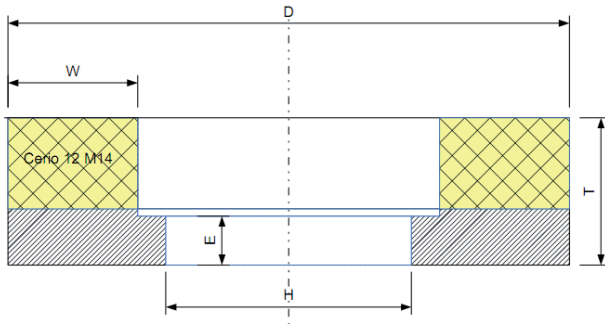


Available grits:  
46 - 60 - 80 - 120 - 180

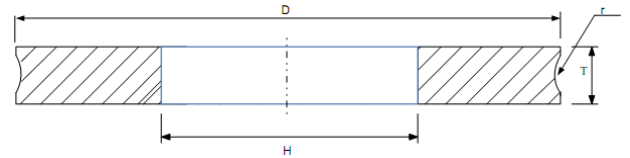
EXCELLENT EDGE-PREPARATION, RELIABILITY AND LONG-LIFE 120 SLK-LE: FOR LOW-E COATING REMOVAL

Standard wheels available in stock for Busetti, Bottero, Bavelloni, Bentler machines.

# TECHNICAL INFORMATIONS



Typical Description of the Cup Wheels  
 $D \times T \times H$  150 x 35 x 70 E10 W25  
Cerio 12 M14



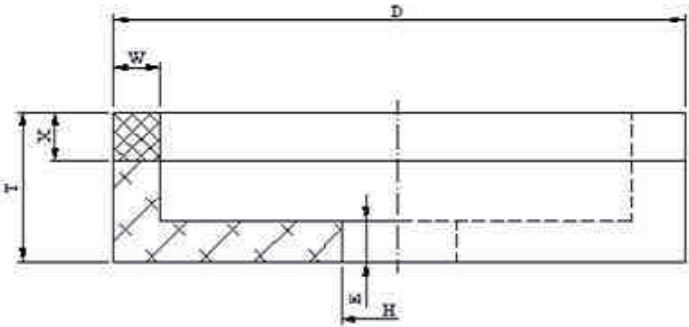
Typical Description of the Peripheral wheels  
 $D \times T \times H$  200 x 20 x 90  
120 AR28 M1

# TECHNICAL INFORMATIONS

## GRIT SIZES

GRANULOMETRY COMPARISON TABLE

FEPA	U.S.MESH ASTM-E-11-70	ISO R 565 1972
D1181	8/9	1181/1000
D1001	9/10	1000/850
D851	20/25	850/710
D711	25/30	710/600
D601	30/35	600/500
D501	35/40	500/425
D426	40/45	425/355
D356	45/50	355/300
D301	50/60	300/250
D251	60/70	250/212
D213	70/80	212/180
D181	80/100	180/150
D151	100/120	150/125
D126	120/140	125/106
D107	140/170	106/90
D91	170/200	90/75
D76	200/230	75/63
D64	230/270	63/53
D54	270/325	53/45
D46	325/400	45/38
D39	400/500	38/25



Typical Description of a Diamond cup wheel  
 D x T x H 150 x 35 x 22 E12  
 W10 X8 181 M18

**EXPORT SALES DEPARTMENT**

Mr. Giuseppe Falcone  
phone +39 349 860 7309  
email [giuseppe@rosver.com](mailto:giuseppe@rosver.com)

**EXPORT SALES ASSISTANT**

Mr. Andrea Cazzini  
email [andrea@rosver.com](mailto:andrea@rosver.com)

**siapi smartech** 

**Rosver srl**

Via Concordia 5/C6

20099 Sesto San Giovanni – Milan – Italy

Export sales department: [giuseppe@rosver.com](mailto:giuseppe@rosver.com)

Export sales assistant: [andrea@rosver.com](mailto:andrea@rosver.com)

T. +39 02 24417219

F. +39 02 2403942

[www.siapismartech.com](http://www.siapismartech.com)



[www.siapismartech.com](http://www.siapismartech.com)