



Mole a disco, ad anello, a tazza

Disc wheels, ring wheels, cup wheels

Settori

Carpenterie metalliche, Produzione pentole, Meccanica di precisione, Industria tessile, Automotive, Ingranaggi, Stampi, Produzione macchine con particolari in acciaio, Nautica, Arredamento, Alimentare, Agricolo, Serbatoi inox

Applicazioni

Lavorazione di spigoli
Sbavatura
Rimozione segni
Preparazione al lucido
Lavorazione cordoni di saldatura: grossi/medi/fini
Sgrossatura - finitura

Diametri / Diameter

125
150

Spessori / Thickness

3-5-6-10-12-15-20

Fori / Holes

20-22-25 (altre misure su richiesta)
(other upon request)

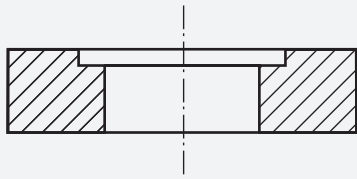
Industrial sectors

Metallic carpentry, Production of pots, Precision mechanics, Textile industry, Automotive, Gears, Molds, Machine production with details in steel, Pharmaceutical, Nautical, Furniture, Food, Agricultural, Inox Tanks

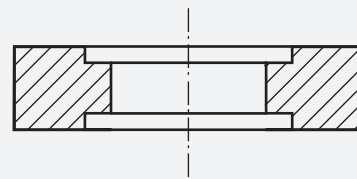
For various applications

Processing of edges
Burring
Removal of marks
Preparation for polishing
Processing of weld seams: big / medium / thin
Roughing - Finishing

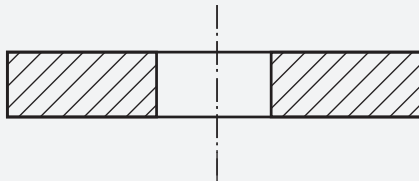




Mola a disco con un incavo
Disc wheel with one recess



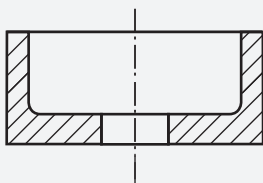
Mola a disco con due incavi
Disc wheel with two recesses



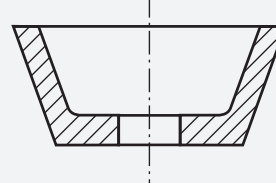
Mola a disco cilindrica
Cylindric disc wheel



Mola ad anello
Ring wheel



Mola a tazza cilindrica
Cylindric cup wheel



Mola a tazza conica
Conical cup wheel

Diametri / Diameter

50
80
100
110
120
125
130
150
200
300
350
400

Spessori / Thickness

3-25-30
3-4-5-8-10-15-30-40
3-5-6-7-8-10-12-15-20-25-30-40-50
10-20
20
3-5-7
10-15-20-25-30-45
3-4-5-6-8-10-12-15-20-25-30-35-40-50
3-4-5-6-7-8-10-12-15-20-25-30-50
8-10-15-20-25-30-50
40
25-40

Fori / Holes

6-12-25
6-10-16-20-22-30-50
6-8-10-12-16-20-22-25-30
20-25
20
8-14-20-22,5-25
20-25-40
6-8-10-12-14-15-16-20-22-24-25-30-32-40
16-20-22-24-25-30-32-35-50-54-76-90
20-25-35-50-75-76,2-80-127
20
127

altre misure su richiesta
other upon request





Abrasivi

Corindone rosso bruno, Corindone bianco,
Carburo di silicio, Corindone rosa,
Poliuretano

Fori

Standard
14 – 20 – 22,5 – 25 – 50 – 76,2
altri su richiesta

Grane

36/46 – 46 – 60 – 120 – 220
altre grane su richiesta

Durezze

G = media
K = alta
HS = molto alta

Specifiche Siapi

GARR3M 1 / 2 / 3
KARR 3M2
HSVRR12V
GF

Legante

R = Gomma

Materiali

Acciaio
Acciaio Inox
Alluminio
Metalli preziosi

Abrasives

Red Brown Corundum, White Corundum,
Silicon Carbide, Pink Corundum,
Polyurethane

Holes

Standard
14 – 20 – 22,5 – 25 – 50 – 76,2
and other upon request

Grit sizes

36/46 – 46 – 60 – 120 – 220
and other upon request

Hardness

G = medium
K = high
HS = very high

Siapi specifications

GARR3M 1 / 2 / 3
KARR 3M2
HSVRR12V
GF

Binder

R = Rubber

Materials

Steel
Stainless Steel
Aluminium
Precious Metals